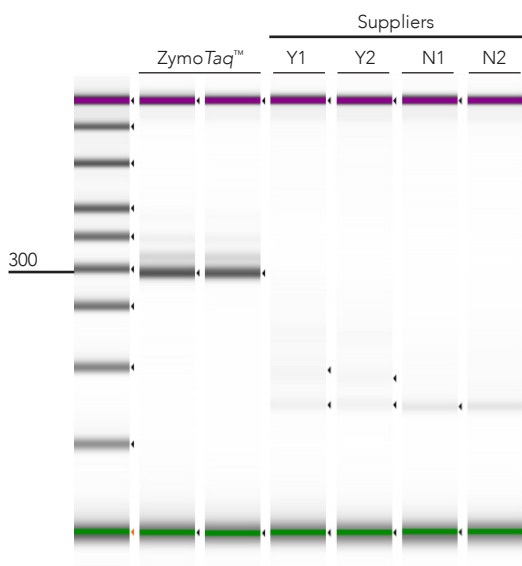


Efficient Amplification from Bisulfite-Converted DNA

ZymoTaq™ DNA Polymerase

- **Reliable:** Hot-start DNA polymerase robustly amplifies DNA, including bisulfite-treated samples.
- **Specific:** Reduces non-specific PCR product formation from difficult templates.
- **Versatile:** Compatible with real-time, quantitative PCR and suitable for TA-cloning.

Reduce Non-specific PCR Product Formation



Efficient PCR amplification of bisulfite-treated DNA for methylation detection. The figure shows a 274 bp product amplified from bisulfite-treated DNA using ZymoTaq™ DNA Polymerase vs. polymerases from Suppliers Y and N. In each case, equal amounts of bisulfite-treated DNA (EZ DNA Methylation®-Lightning Kit from Zymo Research) were used for each duplicate PCR reaction, and the products were visualized using the Agilent 2200 TapeStation® system.

Product	Cat. No.	Size
ZymoTaq™ DNA Polymerase	E2001	50 rxns
	E2002	200 rxns
ZymoTaq™ PreMix	E2003	50 rxns
	E2004	200 rxns
ZymoTaq™ qPCR PreMix	E2054	50 rxns
	E2055	200 rxns

