

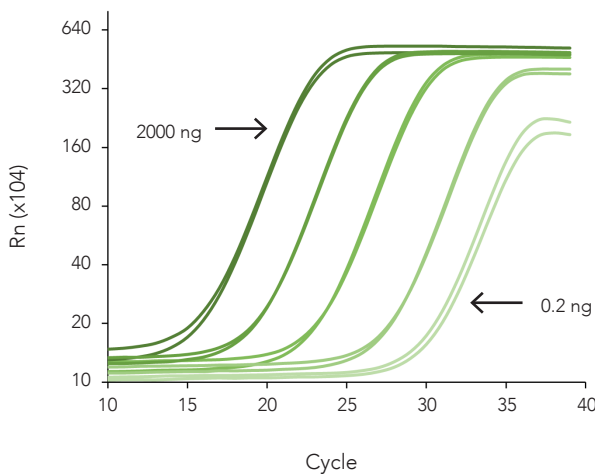
Scalable Bisulfite Conversion

From one sample to high-throughput workflows

EZ DNA Methylation® MagPrep Series

- **Scalable:** Streamlined workflow adaptable for manual or automated processing.
- **Reliable:** Incorporates citation-leading bisulfite chemistries with low-elution bead-based purification to recover > 50pg of DNA for methylation analysis.
- **NGS-ready:** Purified bisulfite DNA is ideal for library preparation, methylation-sensitive PCR assays, microarrays, etc.

Linear Recovery of Bisulfite DNA

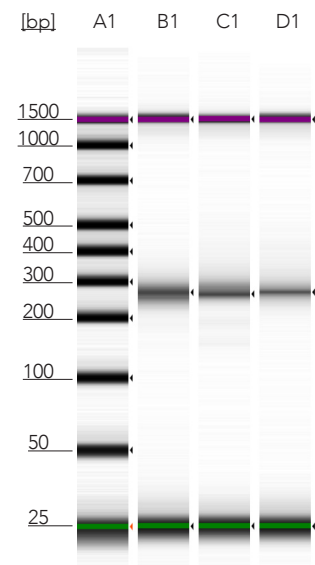


The EZ-96 DNA Methylation-Lightning MagPrep is compatible with a range of DNA inputs and has a linear recovery ($R^2 = 0.9977$). A 10-fold dilution series of human genomic DNA, ranging from 2000 ng to 0.2 ng, was bisulfite converted, and recovery was assessed by qPCR targeting the DAPK1 region ($n = 2$).

Product	Cat. No.	Size
EZ-96 DNA Methylation MagPrep	D5040	4 x 96 rxns.
	D5041	8 x 96 rxns.
EZ-96 DNA Methylation-Gold MagPrep	D5042	4 x 96 rxns.
	D5043	8 x 96 rxns.
EZ-96 DNA Methylation-Direct MagPrep	D5044	4 x 96 rxns.
	D5045	8 x 96 rxns.
EZ-96 DNA Methylation-Lightning MagPrep (RUO)	D5046	4 x 96 rxns.
	D5047	8 x 96 rxns.
EZ-96 DNA Methylation-Lightning MagPrep (CE-IVD)	D5046-E	4 x 96 rxns.
	D5047-E	8 x 96 rxns.

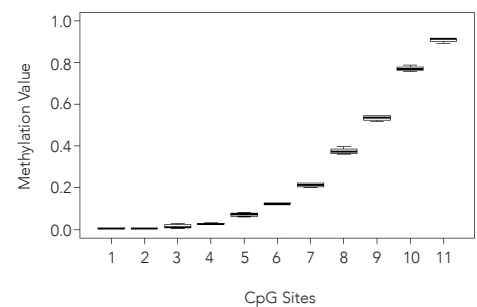
* Automation scripts available upon request

Consistent Library Preparation



Three pools of targeted bisulfite sequencing libraries were analyzed on the Agilent 2200 TapeStation® HSD1000. Each pool contains over 35 samples that were individually bisulfite converted using the DNA Methylation-Lightning MagPrep followed by library preparation.

Reproducible Methylation Detection



Targeted bisulfite sequencing of 11 unique CpG sites with various methylation levels show reproducible methylation calling across four replicates.

